

Historical Geography Research Group



IN THIS ISSUE

- ◆ Letter from the chair
- ◆ HGRG General Info
- ◆ Dissertation competition
- ◆ HGRG Postgraduate Conference announcements
- ◆ Seminar session listings
- ◆ RGS-IBG HGRG sponsored sessions
- ◆ Feature on Historical Geography publishing
- ◆ Call for thesis abstracts

COPY FOR NEXT ISSUE

Date for new copy: 30th September Please send to h.hawkins@exeter.ac.uk

Letter from the Chair

Dear HGRG Member,

In this, the second electronically available newsletter of the Historical Geography Research Group, you will find the usual diverse range of information about forthcoming events, conference activities, publications, research reports and competitions, all dedicated to advancing scholarship in Historical Geography.

As Chair of HGRG I should also point out that the newsletter can serve as a place to record the specific and significant contributions of individuals to the Historical Geography community. It is in this regard that we note the death of Trevor Wild, earlier this year.

Trevor Wild, formerly of University of Hull, produced publication No. 4 in the Historical Geography Research Series in 1980. This volume was the first of the Registers of Research in Historical Geography.

Hayden Lorimer

(Chair of the Historical Geography Research Group)



Historical Geography Research Group - AGM

At RGS- IBG Annual General Meeting in Manchester (26th- 28th August), Friday lunchtime, after the Emerging and New Research in Historical Geography Sessions.

Register for the conference <http://www.rgs.org/OurWork/Research+and+Higher+Education/Annual+Conference.htm>



RGS-IBG Historical Geography Research Group: committee vacancies

Nominations are sought for the positions of HGRG Chair, HGRG Secretary, HGRG Conference Coordinator and HGRG Membership Secretary.

The HGRG AGM will be held on Friday the 28th August at 13.10 in room 3.212 University Place, at The University of Manchester main campus on Oxford Road. All members are welcome to attend.

Several committee members will be stepping down at this AGM (Chair, Secretary, Conference Coordinator and Membership Secretary).

The RGS requires that nominations for these posts be made in writing (e-mail acceptable) and include the names of a proposer and seconder. Nominations can be accepted up to the beginning of the AGM.

Please get in touch if you would like to discuss any of these posts further, informally or otherwise.

Yours sincerely

Dr Nicola Thomas (nicola.i.thomas@exeter.ac.uk)

Journal of Historical Geography discount available for HGRG postgraduate students:

Postgraduate students who are members of HGRG can receive the 2009 subscription (Volume 35, 4 issues) of the Journal of Historical Geography at a discounted rate of £25.

To subscribe please contact our Customer Service Department [Email: JournalsCustomerServiceEMEA@elsevier.com or Tel: +31 20 485 3757] and specify that you are postgraduate member of HGRG. For more information about the Journal of Historical Geography please visit the homepage [www.elsevier.com/locate/jhg].

HGRG COMMITTEE CONTACT DETAILS

2008/2009 Contact List

Dr Hayden Lorimer
Honorary Chair,
Department of Geography,
University of Glasgow Glasgow
G12 8QQ Scotland
Tel: +44 (0)141 3304782
E-mail: hlorimer@geog.gla.ac.uk

Dr Nicola Thomas
Honorary Secretary
Department of Geography
University of Exeter ,Rennes
Drive, Exeter EX4 4RJ England
Tel: +44 (0) 1392 264449
Email: Nicola.J.Thomas@exeter.ac.uk

Prof. Jon Stobart
Honorary Treasurer
School of Social Sciences ,The
University of Northampton, Park
Campus, Boughton Green Road
Northampton NN2 7AL,
England
Email: jon.stobart@northampton.ac.uk

Dr David Nally
Honorary Editor of the Research
Series
Department of Geography
University of Cambridge,
Downing Place, Cambridge, CB2
3EN, England E-mail:
david.nally@geog.cam.ac.uk

Merle Patchett
Honorary E-Circulation Officer
Department of Geography and
Geomatics, University of
Glasgow, G12 8QQ E-mail:
mpatchett@geog.gla.ac.uk



HGRG General Information

HGRG Small Conference and Seminar Funding:

Download Application Form at the [HGRG website](#)

Guidelines for Conference and Seminar Programme Funding

Organisers may apply for grants or loans up to a max. of £250.

Funding Regulations

- i. the applicant should be a HGRG member;
 - ii. all publicity materials and resultant publications acknowledge HGRG support;
 - iii. the organising committee give an assurance that any money not used will be returned;
 - iv. the grant is used to fund the travel costs and conference attendance;
 - v. a minimum of £50 is used to fund postgraduate attendance;
 - vi. all funded postgraduates join the HGRG;
- conference organisers provide a financial statement regarding use of the money;
- vii. conference organisers provide a short conference report of 300 words for the HGRG newsletter.

Grant application procedures

Application forms are available from the Secretary and on the HGRG website.

Grant application deadline

The deadline for receipt of grant applications is 1 December in any one year. Applicants in any doubt about their eligibility or any other aspect of their application are advised to contact the HGRG Chair, Dr Hayden Lorimer, or Secretary, Dr Nicola Thomas, who will be pleased to help.

HGRG COMMITTEE CONTACT DETAILS

Dr Heidi Scott
Honorary Conference Officer,
Institute of Geography and Earth,
Sciences, University of Wales,
Aberystwyth, Aberystwyth,
Ceredigion, SY23 3DB, Wales
E-mail: hvs@aber.ac.uk

Dr David Lambert
Honorary Membership Secretary
Department of Geography Royal
Holloway, University of London
Egham, Surrey TW20 0EX England
Email: d.lambert@rhul.ac.uk

Dr Harriet Hawkins
Honorary Newsletter Secretary
Department of Geography
University of Exeter, Rennes
Drive, Exeter EX4 4RJ England
E-mail: h.hawkins@exeter.ac.uk

Prof. Catherine Brace
HGRG Web Editor
Department of Geography
University of Exeter in Cornwall
Tremough Campus, Treliiever
Road Penryn, Cornwall, TR11
9EZ
E-mail: c.brace@exeter.ac.uk

Dr Diarmid Finnegan
Ordinary Member with
responsibility for Dissertation
Prize School of Geography,
Archaeology and Palaeoecology
Queen's University Belfast
Belfast, BT7 1NN Northern
Ireland
E-mail: d.finnegan@qub.ac.uk



HGRG General Information

HGRG/ CUP Dissertation

Every year the Historical Geography Research Group in association with Cambridge University Press offers a prize to the best undergraduate dissertation based on original research and showing conceptual sophistication in any area of historical geography. The successful prize winner will receive £150 of CUP published books, and will be invited to submit an article based on their dissertation for publication in the Journal of Historical Geography (subject to the standard refereeing procedures of the journal). The winner will also be invited to present their work at the annual HGRG Practising Historical Geography Conference in November.

Deadline for submissions: 8 July in any one year

Requests for further information and dissertation submissions should be sent to:

Dr Diarmid Finnegan,
School of Geography,
Archaeology and Palaeoecology (GAP),
Queen's University
Belfast,
Belfast, BT7 1NN

HGRG COMMITTEE DETAILS CONT...

Isla Forsyth,
Postgraduate Committee
Members with responsibility for
Conferences
Department of Geography and
Geomatics, University of
Glasgow, Glasgow, G12 8QQ
E-mail: Isla.forsyth@ges.gla.ac.uk

Lois Jones,
Postgraduate Committee
Members with responsibility for
Conferences
School of Geography &
Geosciences, Irvine Building
University of St Andrews, North
Street, St Andrews, FIFE, KY16
9AL E-mail: lj8@st-andrews.ac.uk

Franklin Ginn
Postgraduate Committee
Member Deputy Editor of the
Research Series
King's College London
Department of Geography
K4. L10 Kings Building Strand,
London WC2R 2LS
E-mail: franklin.ginn@kcl.ac.uk

Please inform the Membership
Secretary if you change your
postal address, and the

Membership Secretary and
Electronic List Coordinator if you
change your e-mail address

HISTORICAL GEOGRAPHY RESEARCH GROUP

PRACTICING HISTORICAL GEOGRAPHY CONFERENCE

15TH ANNUAL POSTGRADUATE AND UNDERGRADUATE DAY CONFERENCE

**WEDNESDAY 4TH
NOVEMBER**

Royal Holloway
University of London

For more information please
contact: Heidi V. Scott (Institute
of Geography and Earth Sciences,
Aberystwyth University) at
hvs@aber.ac.uk or 01970 622647.

KEYNOTE LECTURES:

- Keith Lilley, School of Geography, Queen's University, Belfast
- Luciana Martins, School of Languages, Linguistics, and Culture, Birkbeck, University of London

HISTORICAL GEOGRAPHY WORKSHOPS:

- Ruth Craggs, Schools of Management and Social Sciences, St. Mary's University College, Twickenham
- Alasdair Pinkerton, Department of Geography, University of London

Plus: Talks by current postgraduate researchers in historical geography (Speakers TBC)

****provisional program****



Maps and Society

The Warburg Institute

Nineteenth Series: 2009- 2010

Lectures in the history of cartography convened by Catherine Delano Smith (Institute of Historical Research), Tony Campbell (formerly Map Library, British Library), and Alessandro Scafi (Warburg Institute). Meetings are held on selected Thursdays at The Warburg Institute, University of London, Woburn Square, London WC1H 0AB at 5.00 pm. Admission is free. Meetings are followed by refreshments. All are most welcome. Enquiries: +44 (0) 20 8346 5112 (Dr Delano Smith) or <info@tonycampbell.info>.

2009

- November 5. Professor Richard Talbert (Department of History, University of North Carolina). 'The Artemidorus Papyrus and Its (ancient ?) Map of ...Where ... ?'
- December 3. Dr Carla Lois (Universidad de Buenos Aires; Universidad Nacional de La Plata). 'Toponymic Landscapes: Ways of Seeing Patagonia in Early Argentinean Maps'.

2010

- January 21. Alexander Johnson (Department of History, University of Exeter). 'Board of Trade and Its Cartographic Agenda in British North America, 1748-1782'.

MEETING SPONSORED BY THE HAKLUYT SOCIETY

- February 25. Captain Michael Barritt, RN (Vice-President, Hakluyt Society). 'Practical Men of Science': Operational Surveys in the French Revolutionary and Napoleonic Wars, and the Emergence of the RN Hydrographic Specialisation'.
- March 18. Dr Alexander Kent (School of Geography, University of Southampton). 'Landscape or Blandscape? Exploring Cartographic Style in European Topographic Maps of the 20th Century'.
- April 15. Dr Adam Mosley (Department of History and Classics, University of Swansea). 'Cosmography and Cartography: Their Relationship Revisited'.
- April 29. Dr Chet Van Duzer (Independent Scholar). 'Settling Disputes through Cartography in Fourteenth-Century Palma de Mallorca: The Map of the Siquia Aqueduct'.
- May 27. Dr Sandra Sáenz-López Pérez (Ministerio de Ciencia e Innovación, Madrid). 'European Encounters with 'the Other' in Sixteenth-Century Cartography'.

This programme has been made possible through the generous sponsorship of the Antiquarian Booksellers Association, the International Map Collectors' Society, and Jonathan Potter of Jonathan Potter Ltd. It is supported by Imago Mundi: the International Journal for the History of Cartography.

The web version of the programme <<http://www.maphistory.info/warburgprog.html>> can be bookmarked, as it will always contain the current details. For a comprehensive list of talks and meetings in the history of cartography, see John Docktor's 'Calendar' <<http://home.earthlink.net/~docktor/index.htm>>

Tony Campbell <info@tonycampbell.info>

CFP: Correspondence: Travel, Writing, and Literatures of Exploration, c. 1750–c. 1850

CALL FOR PAPERS

Correspondence: Travel, Writing, and Literatures of Exploration, c. 1750–c. 1850

The University of Edinburgh (Institute of Geography and Centre for the History of the Book), in collaboration with the National Library of Scotland, is pleased to announce “Correspondence: travel, writing, and literatures of exploration, c. 1750–c. 1850”—a four-day, interdisciplinary conference concerned with travel, travel writing, and the associated literatures of exploration.

In bringing together scholarly perspectives from geography, book history, literary studies, and the history of science, the conference seeks to interrogate the relationship between travel, exploration, and publishing in order better to understand how knowledge acquired ‘in the field’ became, through a series of material and epistemic translations, knowledge on the page. Plenary speakers include **Elizabeth Bohls** (University of Oregon), **Joyce Chaplin** (Harvard University), **Tim Fulford** (Nottingham Trent University), and **Nigel Leask** (University of Glasgow). Proposals for papers on all aspects of travel in the period in question are welcome. Preference may be given to papers which engage with one or more of the following themes:

- **Travellers’ inscriptive practices**

How, where, when, and why did travellers and explorers choose to record the details of their journeys? In what respects did the mode and style of travellers’ written accounts—whether rough notes, regularised diaries and logs, thematic reports, or letters—discipline their content and reflect their intended purpose?

- **Travellers’ credibility and the veracity of written accounts**

Given that travellers and explorers were only ever partial and imperfect witnesses, how did they assure themselves—and, through the published versions of their work, their audiences—of the truth? How did their accounts correspond to the things they sought to describe and understand? What were the epistemological bases to travellers’ claims to truth?

- **The correspondence between manuscript and print**

What were the material and epistemic transformations which turned travellers’ initial notes into completed, published narratives? Which changes and adaptations were considered necessary in making the transition from manuscript to print? How, in a pre-photographic age, were credible illustrations produced in the field, and how did they supplement and lend authority to printed texts?

Proposals of no more than 250 words should be sent to Dr Innes M. Keighren, Institute of Geography, University of Edinburgh, Drummond Street, EDINBURGH, EH8 9XP or by email to innes.keighren@ed.ac.uk no later than 1 October 2009. The organizers hope to have a programme of over twenty papers over the four days of the meeting (including plenary papers).



Arts & Humanities
Research Council

HGRG Sponsored Sessions



Narrating Landscape

Stephen Daniels
(University of
Nottingham)

Hayden Lorimer
(University of Glasgow)

**Provisionally
timetabled for
Wednesday**

Session 1: Narrating Landscape and Environment: Creative Excavations

Chair: Stephen Daniels (University of Nottingham)

- 1) *Improving the Narrative: landscape change, temporality and encounter in the historic landscape.* Jonathan Finch (University of York)
- 2) *The Depth of Landscape: a novel perspective from ethereal evidence* Glynn Kelso (Queen's University, Belfast)
- 3) *Introducing Continuity to Narratives of Parliamentary Enclosure: the limits of change in a Midland landscape* Matthew Cragoe (University of Sussex) Briony McDonagh (University of Sussex)
- 4) *Narrating the Roman Wall through chorography* Richard Hingley (Durham University)
- 5) *Narrating the postcolonial landscape: the archaeologies of race at Hadrian's Wall* Divya Tolia-Kelly (Durham University)

Session 2: Narrating Landscape and Environment: Travelling Encounters

Chair: Hayden Lorimer (University of Glasgow)

- 1) *Narrative at work: landscape depiction and authorial restriction in the travel narrative s of George Francis Lyon (1795-1832),* Charles Withers (University of Edinburgh)
- 2) *Geologists on tour: representing the scenic and scientific gaze of earth scientists* Innes Keighren (University of Edinburgh)
- 3) *Telling the Cinchona Story: Imperial Narratives of Environment, Science and Economics* Lucy Veale (University of Nottingham)
- 4) *Madagascar as a fiction in English* Stephanie Jones (University of Southampton)
- 5) *Narrating the state and the self: Meliscent Shephard's formative interaction with the political landscapes of interwar colonial India* Stephen Legg (University of Nottingham)

Session 3: Narrating Landscape and Environment: Placing Site, Region and Process

Chair: Stephen Daniels (University of Nottingham)

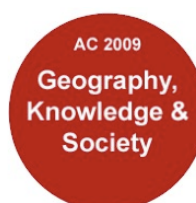
- 1) *The Lower Omo Valley: three stories, one landscape* David Anderson (Oxford University) David Turton (Oxford University)
- 2) *Describing Landscape: Six Regional Sites* David Matless (University of Nottingham)
- 3) *'There were lots of emotions there when I was young... and there still are': when intimate memories animate landscape stories* Helen Maulion (University College Cork / Université de Nantes, France)
- 4) *Memoirs for the Earth* Hayden Lorimer (University of Glasgow)
- 5) *Stretched-out stories: making sense of transience* Caitlin DeSilvey (University of Exeter)

Session 4: Narrating Landscape and Environment: Real and Unreal Stories

Chair Hayden Lorimer (University of Glasgow)

- 1) *Narrating Oklahoma: Participatory Historical Geography and Unreal Events* Dydia DeLyser (Louisiana State University, USA)
- 2) *Chronotopes in Narrations of Road Historical Landscapes: Norwegian literature of road history in the inter-war period (1920s-1940s).* Torgrim Sneve Guttormsen (Norwegian Institute for Cultural Heritage Research)
- 3) *Raindogs: performing the city* Mike Pearson (Aberystwyth University)
- 4) *Senses of being: narratives of bird sounds and place-making in Britain, Australia and New Zealand* Andrew Whitehouse (University of Aberdeen)
- 5) *Fairy tale narratives: the liminal landscapes of the trickster figure* Deborah Knight (University of Exeter)

HGRG Sponsored Sessions



Cartographies of Inclusion and Exclusion

Heather Winlow (Bath Spa University)

**Provisionally
timetabled for
Wednesday**

Session 1: Cartographies of Inclusion and Exclusion 1 Chair: Nick Baron (University of Nottingham)

- 1) *State Cartographies and Exclusion: Mapping American Indian reservations, 1850-1950.* Heather Winlow (Bath Spa University)
- 2) *Cartography, indigenous peoples and the decolonization of the Bolivian State* Irène Hirt (University of Geneva, Switzerland) Louca Lerch (University of Geneva, Switzerland)
- 3) *Afro-French Subjectivities and French Postcolonial Spaces* Yasser Munif (University of Massachusetts, Amherst, USA)
- 4) *Uti Possidetis and Rubber Boom in the the cartographic clash over the Andean-Amazonian basin. Imagined contested amazonian borders between Brazil, Bolivia, Colombia, Ecuador, and Peru, in the second half of the nineteenth century.* Sebastian Diaz Angel (Razón Cartográfica)
- 5) *Panel Discussion:* Heather Winlow (Bath Spa University) Irène Hirt (University of Geneva, Switzerland) Yasser Munif (University of Massachusetts, Amherst, USA) Sebastian Diaz Angel (Razón Cartográfica)

Session 2: Cartographies of Inclusion and Exclusion 2 chair Heather Winlow (Bath Spa University)

- 1) *Cartographic Controls and the Formation of the Soviet State: Debates over Map Secrecy and Systematisation in the USSR, 1919-1925* Nick Baron (University of Nottingham)
- 2) *Cartographic Language And The Good View: Understanding Stylistic Diversity In European State Topographic Maps* Alexander Kent (University of Southampton)
- 3) *Whose land? A study into the collection, use and dissemination of contentious historic geographic information* Mairéad de Róiste (Victoria University of Wellington, New Zealand)
- 4) *A Cartographic Beacon: The Case of a Great-Lake in West Africa* Gerald J. Rizzo (Suffolk University)
- 5) *Panel Discussion:* Heather Winlow, Nick Baron, Alexander Kent Mairéad de Róiste Gerald J. Rizzo

Certain subjects? Constructing identities, personalities and personas from the archive

Isla Forsyth (University of Glasgow) Will Hasty (University of Glasgow), Cheryl McGeachan (University of Glasgow) Jo Norcup

**Provisionally
timetabled for
Thursday**

- 1) *'Where they can remain obscure from the light of day': R. L. P. Bell's diaries and the Empire Mining and Metallurgical Congresses 1927, 1930* Paul Ashmore (University of Sheffield)
- 2) *The cultural geography of camouflage; opening the archive in search of a cubist portrait* Isla Forsyth (University of Glasgow)
- 3) *Talking about architecture* Bronwen Edwards (Leeds Metropolitan University)
- 4) *'...a fairly typical Northern-urban product, wiry and tenacious, rather pallid very determined and conscientious'* Avril Maddrell (University of the West of England)
- 5) *Sir Robert Constable, knight: fragments of a medieval life* Briony McDonagh (University of Hertfordshire)

HGRG Sponsored Sessions



Art and Geographical Knowledge

Harriet Hawkins
(University of Exeter)

**Provisionally timetabled
for Thursday**

Session 1: Art and Geographical Knowledge 1: sites, processes and methods

- 1) *Landscape in the Age of Digital Reproduction: The photography of Beate Gutschow* Alex Vasudevan (University of Nottingham)
- 2) *Artist's books and geographical knowledge: the Tarasque Press 1964-1972* Hannah Neate (University of Nottingham)
- 3) *The Body and the Book: Geographically knowing Installation art* Harriet Hawkins (University of Exeter)
- 4) *A relay of Joy: Cybernetic assembly, synesthesia and non-representational theory* Charles Travis (Trinity College Dublin) Tim Long (Canterbury Christ University)
- 5) *Studying art from a geographical perspective: some reflections* Huw Jones (University of Glasgow)

Session 2: Art and geographical Knowledge 2: Exhibition and education

- 1) *Interventions into space: art and the unmaking of geographical knowledge.* Emily Jackson (Durham University)
- 2) *The Epistemology of Visual Images: Geographical Imaginaries in the Contemporary Art Exhibition*, Shannon Doyle D'Avout (University of Marc Bloch Strasbourg, France)
- 3) *Beyond the cabinet at the museum: thinking cultural geographies of race and archaeology* Divya Tolia- Kelly (Durham University)
- 4) *Collaboration, creativity and consequence: what happens when Art and Geography PGCE students weave their practice together* Rachel Lofthouse (Newcastle University) Sophie Cole (Northumbria University)
- 5) *Inspirational Landscapes: intercalating art and science in a cross-disciplinary environment.* Daniel Allen (Keele University)
Peter Knight (Keele University) Miriam Burke (Keele University)

Session 3: Art and Geographical Knowledge Exhibition session 1: Art and social engagement

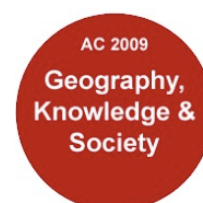
- 1) *Caravanserai: Fieldwork Project* Annie Lovejoy (University College Falmouth) Catherine Brace (University of Exeter)
- 2) *Rescue Geography and Documentary Photography: blurring the art/research boundary* Phil Jones (University of Birmingham)
James Evans (University of Manchester)
Dan Burwood (Independent photographer)
- 3) *Reconstructing a Vanished World in Cyberspace: The Making of Dream Homes* property consultants Alexandra Handel, University of the arts, London.
- 4) *Mapping identity* (Teresa Cirenios Iniva)
- 5) *Loitering with intent...to start conversations* Hilary Ramsden (Artist)

Session 4: Art and Geographical Knowledge. Exhibition session 2: Other ways of knowing?

- 1) *Drawing as research method: Fashioning Diaspora Space* Helen Scalway (Royal Holloway, University of London/ V & A)
- 2) *Flirting with Space* David Crouch (University of Derby)
- 3) *Cryptosphere, Residency and Exhibition* Simeon Nelson (University of Hertfordshire)
- 4) *Cartographies of Experience* Louise Cabeen (University of Washington Seattle, USA) Alexandra Handal (University of Arts, London)
- 5) *Sound Art, Experimental Music and Geography* Michael Gallagher (University of Edinburgh)



HGRG Sponsored Sessions



Constructing Spaces of (Im)-Mobility: Geo-historical Perspectives

Nir Cohen (Ben Gurion University of the Negev, Israel)

Provisionally timetabled for Thursday

- 1) *Diasporas and the impossibilities of citizenship: Neo-colonial reconstructions of the Indian diaspora in India-East Africa relations* Jen Dickinson (University of Leicester)
- 2) *Constructing road as a place: the case of Hura-Yatir Bedouins* Arnon Ben-Israel (Ben Gurion University of the Negev, Israel)
- 3) *Producing (Im)mobility in the Age of Aluminum: From Caribbean Bauxite Mines to Apollo Missions* Mimi Sheller (Swarthmore College, USA)
- 4) *From Legalism to Symbolism: Israel's Anti-Mobility Strategy, 1948-1958* Nir Cohen (Ben Gurion University of the Negev, Israel)
- 5) *The 'Kachin' Shifting through Time and Space*, Karin Dean (Tallinn University, Estonia)

Histories of (un)natural disasters: knowledge, blame and defenses

Anna Carlsson (University of Manchester)

Provisionally timetabled for Thursday

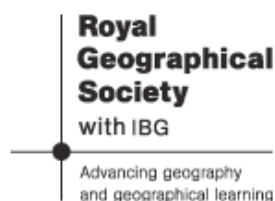
- 1) *Changes in hazard perception, societal impacts and strategies for flood mitigation: evidence within historical flood chronologies of 'muckle spates' in Scotland (1200 to present)*. Lindsey McEwen (University of Gloucestershire) Iain Robertson (University of Gloucestershire)
- 2) *Finding, managing and living with flood: the perspectives of diarists in the on-going recovery process in Hull* Will Medd (Lancaster University) Rebecca Sims (Lancaster University) Walker Gordon (Lancaster University)
- 3) *An (un)natural disaster?: The UK Dutch Elm Disease Outbreak of the 1970s* Isobel Tomlinson (Imperial College London) Clive Potter (Imperial College London)
- 3) *The (un)natural causes of the January 1928 flooding of London* Anna Carlsson (University of Manchester)
- 4) *Responsibilities for the Crisis: "constructing the famine in the British provincial press"* Anelise Shrout (New York University, USA).

Constructing Spaces of (Im)-Mobility: Geo-historical Perspectives

Nir Cohen (Ben Gurion University of the Negev, Israel)

Provisionally timetabled for Thursday

- 1) *Diasporas and the impossibilities of citizenship: Neo-colonial reconstructions of the Indian diaspora in India-East Africa relations* Jen Dickinson (University of Leicester)
- 2) *Constructing road as a place: the case of Hura-Yatir Bedouins* Arnon Ben-Israel (Ben Gurion University of the Negev, Israel)
- 3) *Producing (Im)mobility in the Age of Aluminum: From Caribbean Bauxite Mines to Apollo Missions* Mimi Sheller (Swarthmore College, USA)
- 4) *From Legalism to Symbolism: Israel's Anti-Mobility Strategy, 1948-1958* Nir Cohen (Ben Gurion University of the Negev, Israel)
- 5) *The 'Kachin' Shifting through Time and Space*, Karin Dean (Tallinn University, Estonia)



HGRG Sponsored Sessions



Geography and Religion in the Long Nineteenth Century

Diarmid A. Finnegan (Queen's University, Belfast) **Edwin Aiken** (Queen's University) **Avril Maddrell** (University of the West of England)

Provisionally timetabled for Friday

- 1) *Inscribing Scriptural Spaces: Geographical knowledge and religious apologetics in the nineteenth-century* Edwin Aiken (Queen's University, Belfast)
- 2) *Saving Epping Forest for the people: the religious and moral nature of 'nature' in the early conservation movement* Elizabeth Baigent (University of Oxford)
- 3) *Religious imaginaries and missionary geographies in mid-Victorian Britain* Diarmid A. Finnegan (Queen's University, Belfast)
- 4) *Religion and education in Britain (c.1870-1910): relationships, scales and space* Catherine Brace (University of Exeter), David Harvey (University of Exeter), Adrian Bailey (University of Exeter)

New and Emerging Research in Historical Geography

Lois Jones (University of St Andrews) **Isla Forsyth** (University of Glasgow)

Provisionally timetabled for Friday

Session 1 Chair: Lois Jones (University of St Andrews)

- 1) *Nineteenth Century Travel Publishing and Geographical Knowledge: Francis Galton's Vacation Tourists and the Art of Travel* Louise Henderson (Royal Holloway, University of London)
- 2) *The Royal Mail Steam Packet Company and maritime spaces of the post-emancipation Caribbean* Anyaa Anim-Addo (Royal Holloway, University of London)
- 3) *What the pirate had to say...* Will Hasty (University of Glasgow)
- 4) *In Search of the Long Path: Capturing Landscape Biographies* Lisa Hill (University of Oxford)

Session 2: Chair: Isla Forsyth (University of Glasgow)

- 1) *The geographies of R.D. Laing: a historical look at the 'Rumpus Room' experiment.* Cheryl McGeachan (University of Glasgow)
- 2) *Turkish Delights: An Historical Geography of Turkish Baths in Victorian London* Charlotte Jones (University College London)
- 3) *19th Century Residential Environment – More Than Just A Physical Setting ?* Elli Winterburn (University of Newcastle)
- 4) *The Spectre of Coal: American photojournalistic encounters of the south Wales coalfield, 1950-1953* Leah Jones (Swansea University)

Feature:**Publishing in Historical Geography*****Historical Geography
Research Series******For more information/ to
discuss ideas contact:******David Nally and
Franklin Ginn***

The Historical Geography Research Series is produced by the Historical Geography Research Group of the Royal Geographical Society with the Institute of British Geographers. The Research Series is designed to provide scholars with an outlet for extended essays of an interpretive or conceptual nature that make a substantive contribution to some aspect of the subject; critical reviews of the literature on a major problem; and commentaries on relevant sources. One or two numbers are produced annually. Contributions to the series are always welcome. Papers should not normally exceed 25,000 words in length, inclusive of notes, tables and diagrams, and should be in English. In addition to single or jointly authored monographs, the Series welcomes themed conference papers or papers grouped around a topic of research relevant to the broad interests of the group. Intending contributors should, in the first instance, send an outline of their proposed paper to the Hon. Editor of the HGRG Research Series, [Dr David Nally](#).

Copies of the Research Paper Series can be purchased at a special annual subscription rate through membership of the Historical Geography Research Group. Orders for libraries or for individual copies should be addressed to the Editor of the Series. Prices shown below may be reduced for Category A members of the Historical Geography Research Group: those titles at £4.95 are priced £2.50, those at £7.95 are priced £4.50, and those at £14.95 at £10.00. All prices include postage and packing. Any queries about research series orders should be directed to the Research Series Editor, [Dr David Nally](#).

**Patronage and the production of
geographical knowledge in France*****the testimony of the first hundred regional monographs
1906-1966*****Hugh Clout*****Now available:***

See below for further details

Issue	Title and Author	Price (£)
No.1	Social Protest in a Rural Society: The Spatial Diffusion of the Captain Swing Disturbances of 1830-1831. Andrew Charlesworth (University of Liverpool)	4.95
No.2	The Ordnance Survey and Land-Use Mapping. Brian Harley (University of Exeter)	4.95
No.3	Medieval Irish Settlements: A Review. Brian Graham (Ulster Polytechnic)	4.95
No.4	Register of Research in Historical Geography. M. Trevor Wild (The University, Hull)	4.95
No.5	The Fordham Collection: A Catalogue. M.J. Freeman (Jesus College, Oxford) and J. Longbotham	4.95
No.6	Sources for Scottish Historical Geography: An Introductory Guide. I. D. Whyte (University of Lancaster) and K. A. Whyte (University of Salford)	4.95
No.7	Parish Registers: An Introduction. Roger Finlay (University of Manchester)	4.95
No.8	British Directories as Sources in Historical Geography. Gareth Shaw (University of Exeter)	4.95
No.9	Rural Settlements: An Historic Perspective. Brian K. Roberts (University of Durham)	4.95
No.10	Spatial Patterns of Urban In-Migration in Late Nineteenth-Century Russia: A Factor Analytical Approach. R. H. Rowland (California State College, San Bernardino)	4.95
No.11	Town and Country in the Development of Early Modern Western Europe. John Langton (University of Oxford) and Goran Hoppe (University of Stockholm)	4.95
No.12	North American Cities in the Victorian Age. David Ward (University of Wisconsin-Madison) and John P. Radford (York University, Ontario)	4.95
No.13	A Gazetteer of English Urban Fire Disasters 1500-1900. E. L. Jones (La Trobe University, Australia), S. Porter (Kings College, London) and M. Turner (University of Essex)	4.95
No.14	Register of Research in Historical Geography 1984. (ed.) Kathleen A. Whyte (University of Lancaster)	4.95
No.15	Urban Epidemics and Historical Geography: Cholera in London 1848-9. Gerard Kearns (University of Liverpool)	Out of Print
No.16	Late Seventeenth Century Taxation and Population: The Nottinghamshire Hearth Taxes and Compton Census. Tim Unwin (Bedford College, London)	4.95

No.17	Seventeenth Century Monserrat: An Environmental Impact Statement. Lydia M. Pulsipher (University of Tennessee)	4.95
No.18	The Military Survey of Scotland 1747 - 1755: A Critique. Whittington and A.J.S. Gibson (University of St. Andrews)	4.95
No.19	A Chronology of Epidemic Disease and Mortality in Southeast England, 1601-1800. Mary Dobson (University of Oxford)	Out of Print
No.20	Register of Research in Historical Geography 1988. (ed.) Kathleen A. Whyte (University of Lancaster)	Out of Print
No.21	The Appalachian Frontier: Views from the East and South West. Robert D. Mitchell (University of Maryland) and Milton B. Newton (Louisiana State University)	Out of Print
No.22	The Geography of England and Wales in 1910: An Evaluation of Lloyd George's 'Domesday' of Landownership. Brian Short (University of Sussex)	Out of Print
No.23	People and Places in the Victorian Census: A Review and Bibliography of Publications based substantially on the Manuscript Census Enumerators' Books 1841-1911. Dennis Mills and Carol Pearce (Open University) and Rosalind Davies, Jo Bird and Carol Lee (Cambridge Group for the History of Population and Social Structure)	7.95
No.24	The Business of Improvement: Agriculture and Scientific Culture in Britain, c.1770 - c.1870. Sarah Wilmot (University of Exeter)	7.95
No.25	Distinguishing Men's Trades: Occupational Sources and Debates for Pre-Census England. Paul Glennie (University of Bristol)	7.95
No.26	A Glossary of Urban Form . Peter Larkham and Andrew Jones (University of Birmingham)	Out of Print
No.27	Nineteenth Century Trade Union Records: An Introduction and Select Guide. Humphrey Southall, Carol Bryce and David Gilbert (Queen Mary and Westfield College, University of London)	7.95
No.28	Nature and Science: Essays in the History of Geographical Knowledge. (eds.) Felix Driver and Gillian Rose (RHBNC and QMWC, University of London)	7.95
No.29	Flows of Labour in the Early Phase of Capitalist Development: the time-geography of longitudinal migration paths in 19th Century Sweden. John Langton (University of Oxford) and Goran Hoppe (University of Stockholm)	7.95

No.30	A Medieval Capital and its Grain Supply: Agrarian Production and its Distribution in the London Region c.1300. Bruce M. S. Campbell (Queen's University, Belfast) and James A. Galloway, Derek Keene and Margaret Murphy (Centre for Metropolitan History, University of London)	14.95
No.31	London's Dreaded Visitation: The Social Geography of Plague in 1665. J.A.I. Champion (Royal Holloway, University of London)	7.95
No.32	A Forbidding Fortress of Locks, Bars and Padded Cells: the locational history of mental health care in Nottingham. Hester Parr (University of Lampeter) and Chris Philo (University of Glasgow)	7.95
No.33	Property Ownership and Urban and Village Improvement in Provincial Ireland, c.1700-1845. Lindsay Proudfoot (The Queen's University, Belfast)	7.95
No.34	Colonial Discourse and the Colonisation of Queen Adelaide Province, South Africa. Alan Lester (St. Mary's University College, University of Surrey)	7.95
No.35	Geographical Education, Empire and Citizenship: Geographical Teaching and Learning in English Schools, 1870-1944. Teresa Płoszajska (Liverpool Hope University College)	14.95
No.36	Geographers Engaged in Historical Geography in British Higher Education 1931-1991. Hugh Prince (University College, London)	4.95
No.37	Chains on the River: The Thames Embankments and the Construction of Nature. Stuart Oliver (St. Mary's University College, University of Surrey)	7.95
No.38	Negotiating Colonialism: Gaelic Reaction to English Expansion in Early Modern Ireland, c.1541-1641. John Morrissey (National University of Ireland, Galway)	7.95
No.39	Home and Colonial: Essays in Celebration of Robin Butlin's Contribution to Historical Geography. Alan Lester (ed.) (University of Sussex)	7.95
No.40	Practising the archive: reflections on method and practice in historical geography. E. Gagen, H. Lorimer, and A. Vasudevan, A. (eds.)	8.00
No.41	Patronage and the Production of Geographical Knowledge in France: The Testimony of the First Hundred Regional Monographs, 1905-1966. Hugh Clout.	12.00

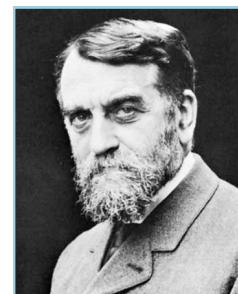
Patronage and the production of geographical knowledge in France

*the testimony of the first hundred regional monographs
1906-1966*

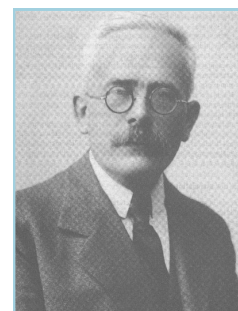
Hugh Clout

In this new monograph produced by the HISTORICAL GEOGRAPHY RESEARCH GROUP **Hugh Clout** explores the production of geographical knowledge in France in the first half of the twentieth century.

Clout examines the first hundred doctoral monographs written by French geographers, and analyses the roles of three academic networks:



- the immediate disciples of *Paul Vidal de la Blache* working while Geography struggled to define itself as a discipline
- the students of *Albert Demangeon*, *Emmanuel de Martonne* and *Raoul Blanchard* during the inter-war 'golden age' of French academic geography
- patrons and researchers of Vidalian geography between 1946 and the upheavals that followed 1968.



Patronage and the Production of Geographical Knowledge in France will appeal to scholars of historical geography, regional studies, intellectual history and the circulation of geographical knowledge.

The Historical Geography Research Series is produced by the Historical Geography Research Group of the Royal Geographical Society with the Institute of British Geographers

Patronage and the Production of Geographical Knowledge in France is priced at £12

It can be purchased from the Research Series Editor, Dr David Nally
(david.nally@geog.cam.ac.uk)

Feature:

Publishing in Historical Geography

RGS- IBG Book Series:

If you would like more information on the Series please go to

**www.rgsbookseries.com or contact
Kevin Ward (Human Geography Editor)
Kevin.ward@manchester.ac.uk or Jo
Bullard (Physical Geography Editor)
J.E.Bullard@lboro.ac.uk**

RGS-IBG Book Series is published by Wiley-Blackwell. The emphasis is on research not on teaching, and on authored not on edited monographs. In its eight years the Series has published over twenty books, with more in the pipeline for 2010 and 2011.

The Book Series only publishes work of the highest international standing. Its emphasis is on distinctive new developments in human and physical geography, although it is also open to contributions from cognate disciplines whose interests overlap with those of geographers. The Series places strong emphasis on theoretically-informed and empirically-strong texts. Reflecting the vibrant and diverse theoretical and empirical agendas that characterize the contemporary discipline, contributions are expected to inform, challenge and stimulate the reader.

Overall, the RGS-IBG Book Series seeks to promote scholarly publications that leave an intellectual mark and change the way readers think about particular issues, methods or theories.

Cambridge Studies in Historical Geography

**Editors: Alan R. H. Baker, Richard
Dennis, Deryck Holdsworth**

Cambridge Studies in Historical Geography encourages exploration of the philosophies, methodologies and techniques of historical geography and publishes the results of new research within all branches of the subject. It endeavours to secure the marriage of traditional scholarship with innovative approaches to problems and to sources, aiming in this way to provide a focus for the discipline and to contribute towards its development. The series is an international forum for publication in historical geography which also promotes contact with workers in cognate disciplines. 41 books have been published in this series to date.

Three more volumes are scheduled for publication in 2009:

Robin A. Butlin (June 2009) *Geographies of Empire: European Empires and Colonies, c.1880-1960*, Cambridge: Cambridge University Press (No.42 in the series of Cambridge Studies in Historical Geography). For details, see:
<<http://www.cambridge.org/uk/catalogue/catalogue.asp?isbn=9780521740555>>

Philip Howell (August 2009) *Geographies of Regulation: Policing Prostitution in Nineteenth-Century Britain and the Empire*, Cambridge: Cambridge University Press (No. 43 in the series of Cambridge Studies in Historical Geography). For details, see:
<http://www.cambridge.org/uk/catalogue/catalogue.asp?isbn=9780521853651>

Michael Wintle (September 2009) *The Image of Europe: Visualizing Europe in Cartography and Iconography throughout the Ages*, c.£65/\$110, Publication in September 2009. (No. 43 in the series of Cambridge Studies in Historical Geography). For details, see:
<<http://www.cambridge.org/uk/catalogue/catalogue.asp?isbn=9780521886345>>



Thesis Abstracts:

Placing the Giant's Causeway: venues, sights and geographies of knowledge

Alasdair Kennedy

School of Geography, Archaeology and Palaeoecology, Queen's University of Belfast,
Email: akennedy12@qub.ac.uk

From being a place of local mythology the Giant's Causeway in the north of Ireland has become a site of global geological and cultural significance. Through a study of some of the ways in which this phenomenon has been understood, this thesis explores the historical and embodied geographies of the field, with particular focus on narratives of natural philosophy, geology, and art. These are framed by the work of geographers, historians, and sociologists of science which has focused on the venues and networks in which knowledge is produced, and by recent considerations of the agency of non-human things in shaping human comprehension. The early beginning of a wider shift in the epistemology of natural philosophy – from thinking which valued the distance of savants from the field, to that which promoted the savant's direct experience of nature – is identified in this study. Debates in the eighteenth and early nineteenth centuries over the origin of basalt illuminate the importance of the field and the laboratory in shaping and grounding knowledge about the earth. Finally, various discourses centred on the concept of landscape are detailed. The thesis emphasises the essentially spatial nature of science; the discursive formation of the field site in a multitude of different spaces; and the centrality of place in fieldwork. Consideration is also given to how the non-human elements of the field are animated through their engagement by the fieldworker in a dialogue. What emerges is a view of the field as a hybrid, more than human, space – a place where humans and non-humans variously come together or collide with each other in conversation or argument.

Historical Geography Research Group Membership

The HGRG is a very large (around 400 members) and active research group of the Royal Geographical Society (with the Institute of British Geographers). The Group aims to initiate and foster research in the field of Historical Geography; to promote discussion by means of meetings and conferences; to further co-operation between cognate disciplines and organisations; and to effect publication of monographs, collected papers and discussion materials. Membership is open to all those who subscribe to these aims. The Group publishes three issues of its newsletter every year updating members on activities and the working of the Group. It also publishes the Research Series

(38 issues published since 1979) which is designed to provide scholars with an outlet for extended essays of an interpretative or conceptual nature that make a substantive contribution to some aspect of the subject; critical reviews of the literature on a major problem; and commentaries on relevant sources.

The HGRG differs from most other RGS-IBG Research Groups in that it charges a membership subscription for the additional services that it offers.

Subscriptions are due on 1 October each year. We have

different membership rates for Ordinary Members and Postgraduate Members

The two categories of membership are:

Category A membership:

Receive HGRG research series and HGRG Newsletter, eligible for various grants, reduced rate on back issues of HGRG research series.

£8.00 for Ordinary Members, £6.00 for Postgraduate Members

Category B membership: Receive HGRG Newsletter, eligible for various grants, reduced rate on back issues of HGRG research series.

£2.00 for Ordinary Members, free for Postgraduate Members

For further details of how to join the HGRG, please e-mail Dr David Lambert, the

Honorary Membership Secretary, at d.lambert@rhul.ac.uk.

HGRG are keen to provide a forum for disseminating abstracts of recently completed doctoral theses in historical geography. Abstracts of around 250 words should be sent to h.hawkins@exeter.ac.uk